

# 700/1700/1800 SERIES

# AIR COUPLERS & PLUGS

AIR COUPLERS & PLUGS  
700/1700/1800 SERIES



## COUPLER/PLUG STYLES

- Milton® offers 11 different automotive & industrial styles
- Most styles are not interchangeable. However, couplers & plugs within the same style, from most manufacturers, will work together
- Milton®'s "Match-Up System" ensures that all couplers and plugs with the same letter code can be used together regardless of thread size
- Milton®'s 3-way couplers (page 55) simplify the process by working with A, M® & T style plugs

## MILTON® PLUG IDENTIFIER

**M-Style®**  
Milton/Industrial Interchange

**1/4" FLOW SIZE**

**PAGE 53**

**V-Style**  
High Flow/European Interchange

**1/4" FLOW SIZE**

**PAGE 54**

**A-Style**  
ARO "210" Interchange

**1/4" FLOW SIZE**

**PAGE 55**

NOTE: PLUG PROFILES ARE ACTUAL SIZE

DRIVEWAY SIGNALS  
800 SERIES

PRESSURE GAGES  
900 SERIES

**T-Style**  
Tru-flate/Parker Interchange

**1/4" FLOW SIZE**

**PAGE 56**

**L-Style**  
Lincoln Interchange

**1/4" FLOW SIZE**

**PAGE 57**

**D-Style**  
Diamond-U Interchange

**1/4" FLOW SIZE**

**PAGE 57**

**P-Style**  
Tru-flate/Parker Interchange

**3/8" FLOW SIZE**

**PAGE 58**

F-R-Ls  
1000/1100 SERIES

**H-Style**  
Milton/Industrial Interchange

**3/8" FLOW SIZE**

**PAGE 59**

**AA-Style**  
ARO "310" Interchange

**3/8" FLOW SIZE**

**PAGE 59**

**G-Style (.125)**  
Tru-flate/Parker Interchange

**1/2" FLOW SIZE**

**PAGE 60**

**G-Style (.375)**  
Milton/Industrial Interchange

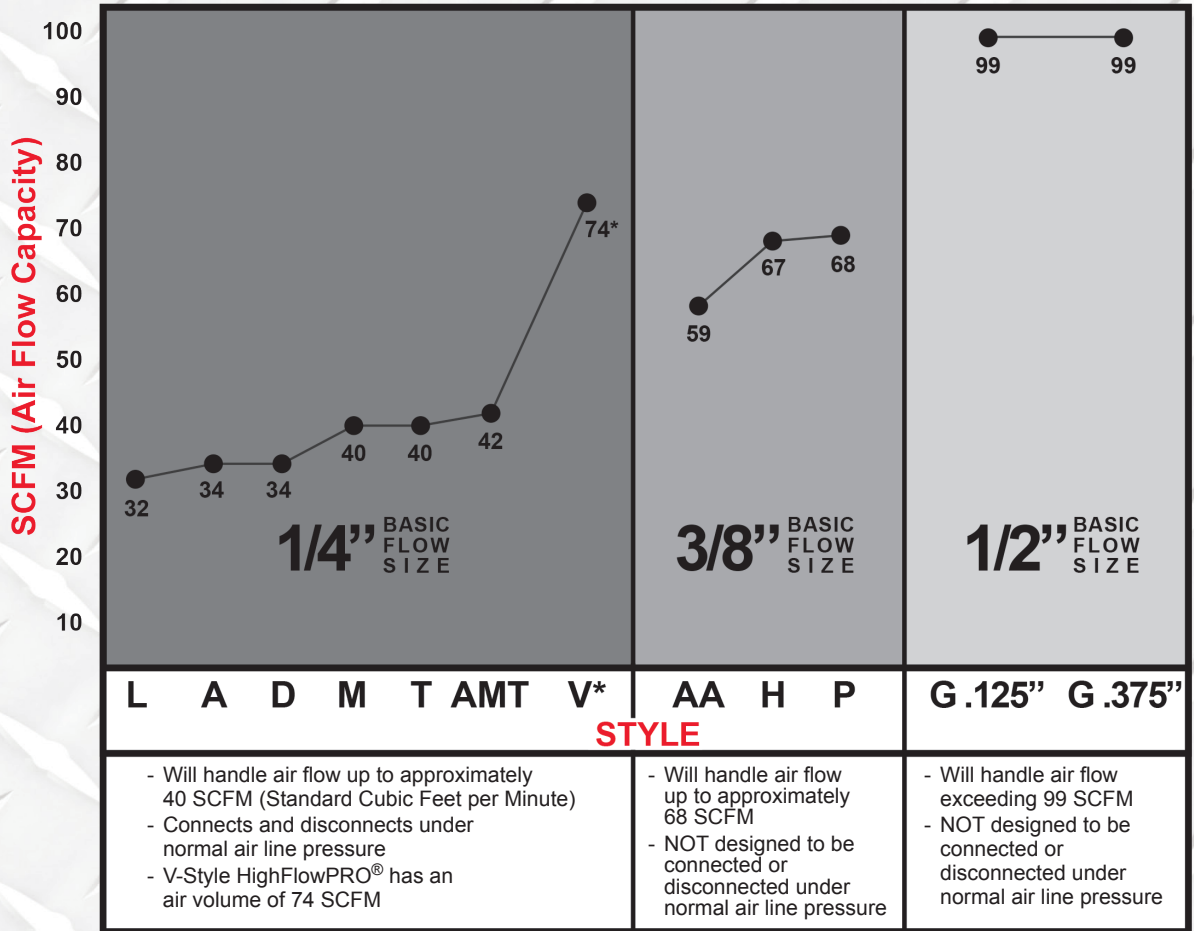
**1/2" FLOW SIZE**

**PAGE 60**

TEST EQUIPMENT  
1200 SERIES

**AIR HANDLING CAPACITY**

- Basic Flow Size defines the air flow capacity
- Please do not confuse Basic Flow Size with Thread Size
- Thread Size is not directly related to air flow capacity in any way



\*Low Pressure, High Volume

**DEFINITION OF TERMS**

**DRAG GUARD**



Protects couplers from accidental disconnection

**PUSH-TYPE**



Eliminates need to retract coupler sleeve to connect. Convenient and time saving option

**PUSH-ON & LOCK**

Push cut hose onto hose barb. Locks hose in place. Only for use with Push-On & Lock hose on Page 47

**RE-CAP**

Recap plugs screw directly onto tire valves to allow for direct coupler connection and faster pressurization

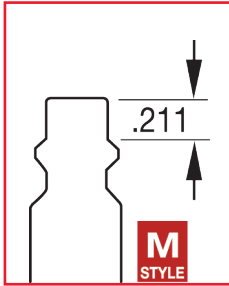
AIR COUPLERS & PLUGS  
700/1700/1800 SERIES

DRIVEWAY SIGNALS  
800 SERIES

PRESSURE GAGES  
900 SERIES

F-R-LS  
1000/1100 SERIES

TEST EQUIPMENT  
1200 SERIES



**M-STYLE<sup>®</sup> INDUSTRIAL INTERCHANGE**

Milton<sup>®</sup> M-Style<sup>®</sup> KWIK-CHANGE<sup>®</sup> couplers and plugs will interchange with all manufacturers who comply with the dimensional requirements of military specification MIL-C-4109, AA-59439 and ISO 6150 B

- 1/4" basic flow size
- M-Style<sup>®</sup> couplers are solid brass
- 3 ball bearing connection
- M-Style<sup>®</sup> plugs are case hardened steel, plated to resist rust
- Maximum inlet pressure: 300 PSI
- Maximum temperature: 250° F
- Air flow: 40 SCFM
- Seals: Buna-N

707 • 713 • 714 • 715 • 716 • 717  
718 • 719 • 755 • 756 • 1717

**M-Style<sup>®</sup> Couplers**

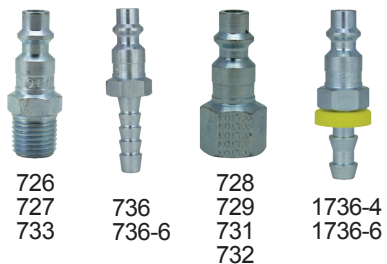
**M-STYLE<sup>®</sup> SAFETY COUPLERS AVAILABLE ON PGS. 52 & 61**



Boxed Part No.	Bulk Part No.	Retail Part No.	Per Card	NPT (in)	Connection	Product Specs	Sleeve	Feature	
707				1/8"	Female	Solid Brass	Brass		
715	715BK	s-715	1	1/4"	Female				
716	716BK	s-716	1		Male				
718	718BK	s-718	1	3/8"	Female				
719	719BK	s-719	1		Male				
755	755BK	s-755	1	1/4"	Female			Steel	Push Type w/ Drag Guard
756	756BK	s-756	1		Male				
713	713BK				Female		Brass	Case Hardened Steel Drag Guard	
714	714BK				Male				
717	717BK				1/4" ID Hose Barb				
717-6	717-6BK				3/8" ID Hose Barb				
1717-4	1717-4BK			1/4" ID Push-on & Lock					
1717-6	1717-6BK			3/8" ID Push-on & Lock					

726 • 727 • 728 • 729 • 731  
732 • 733 • 736 • 768 • 1736

**M-Style<sup>®</sup> Plugs**



Boxed Part No.	Bulk Part No.	Retail Part No.	Per Card	NPT (in)	Connection	Product Specs	Material	Feature
726				1/8"	Male	Case Hardened Steel		
729					Female			
727	727BK	s-727	2	1/4"	Male			
728	728BK	s-728	2		Female			
731	731BK	s-731	2	3/8-32 Size	Female			Recap
732	732BK	s-732	2		Female			
733	733BK	s-733	2	3/8"	Male			
736	736BK				1/4" ID Hose Barb			
736-6	736-6BK			3/8" ID Hose Barb				
1736-4	1736-4BK			1/4" ID Push-on & Lock				
1736-6	1736-6BK			3/8" ID Push-on & Lock				

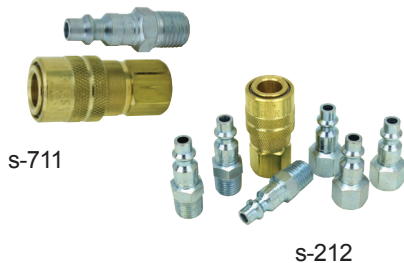
Boxed Part No.	Description
768	Milton <sup>®</sup> Synthetic Replacement Washers*

\*(Fits all M-Style<sup>®</sup> Couplers except ColorFit<sup>®</sup> Couplers)

711 • s-210 • s-211 • s-212  
s-218 • s-219 • s-221  
• s-222 • s-715-4 • s-727-5

**M-Style<sup>®</sup> 1/4" Coupler Kits**

**MORE M-STYLE<sup>®</sup> COUPLER/PLUG KITS ON PGS. 14 THRU 18**



Kit Part No.	Kit includes (qty):				Also includes:
	#715	#716	#727	#728	
711	10		10		
s-711	1		1		
s-210	2		8	2	
s-211	1		3	1	
s-212	1		3	3	
s-218	1		3	1	(1) #99681-4 (pg 40)
s-219			3	1	(1) #99705 (pg 60)
s-221		1	1		(1) #685-4 (pg 41)
s-222	1	1	1	1	(1) #652-1 (pg 39)
s-715-4	4				
s-727-5			5		



WARNING: FOR USE WITH COMPRESSED SHOP AIR ONLY. NOT FOR BREATHABLE AIR USE

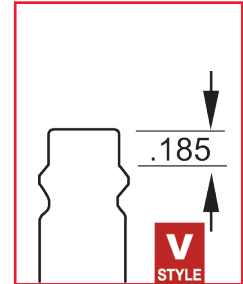
**HIGHFLOWPRO®**

**UP TO 75% MORE FLOW**

**V-STYLE HIGH FLOW INTERCHANGE**

**V-Style specifically designed for high volume and HVLP (High Volume Low Pressure) applications**

- Provides up to 75% MORE FLOW than standard couplers
- V-Style couplers are push-type for quicker connection
- 6 ball bearing connection
- Maximum inlet pressure: 300 PSI
- 1/4" basic flow size
- Maximum temperature: 250° F
- Air flow: 74 SCFM
- Seals: Buna-N



AIR COUPLERS & PLUGS  
700/1700/1800 SERIES

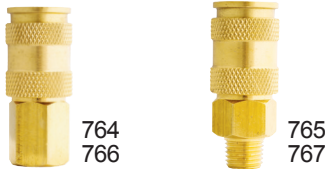
DRIVEWAY SIGNALS  
800 SERIES

PRESSURE GAGES  
900 SERIES

F-R-Ls  
1000/1100 SERIES

TEST EQUIPMENT  
1200 SERIES

**764 • 765 • 766 • 767**



**V-Style HIGHFLOWPRO® Couplers**

Boxed Part No.	Retail Part No.	Per Card	Product Specs				
			NPT (in)	Connection	Body	Sleeve	Feature
764	s-764	1	1/4"	Female	Solid Brass	Solid Brass	Push-Type
765	s-765	1		Male			
766	s-766	1	3/8"	Female			
767	s-767	1		Male			

**NOTE:** V-Style couplers will accept M-Style® and A-Style plugs, however to retain maximum flow use V-Style plugs

**760 • 761 • 762 • 763**



**V-Style HIGHFLOWPRO® Plugs - Brass**

Boxed Part No.	Retail Part No.	Per Card	NPT (in)	Product Specs	
				Connection	Material
760	s-760	2	1/4"	Male	Solid Brass
761	s-761	2		Female	
762	s-762	2	3/8"	Male	
763	s-763	2		Female	

**NOTE:** The use of brass plugs with air tools will cause damage and premature wear on the couplers and plugs

**760-1 • 761-1 • 762-1 • 763-1**

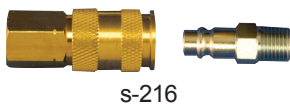


**V-Style HIGHFLOWPRO® Plugs - Steel**

Boxed Part No.	Retail Part No.	Per Card	NPT (in)	Product Specs	
				Connection	Material
760-1	s-760-1	2	1/4"	Male	Case Hardened Steel
761-1	s-761-1	2		Female	
762-1	s-762-1	2	3/8"	Male	
763-1	s-763-1	2		Female	

**NOTE:** Steel plugs are highly recommended for use with any type of percussion tool such as impact tools, grinders, polishers, drills, etc.

**s-216 • s-217**



**V-Style HIGHFLOWPRO® 1/4" Coupler Kits**

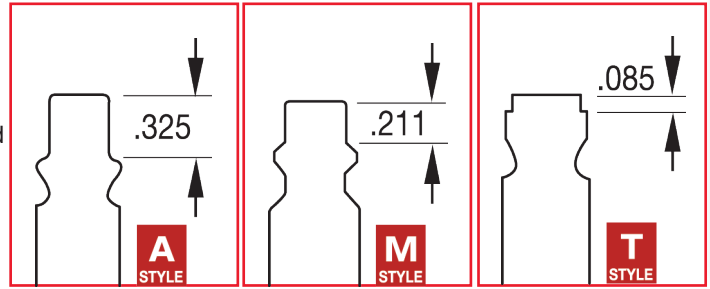
Kit Part No.	Kit includes (qty):		
	#760-1	#761-1	#764
s-216	1		1
s-217	2	2	2



**WARNING:** FOR USE WITH COMPRESSED SHOP AIR ONLY. NOT FOR BREATHABLE AIR USE

**A-M®-T STYLE 3 WAY COUPLERS**

- 1/4" basic flow size
- A-M®-T Style are push type with Drag Guard
- 3 ball bearing connection
- Heavy duty brass - rust resistant
- Accepts the 3 most popular 1/4" basic style plugs sold
  - Milton® or industrial style plugs (M-Style®)
  - Aro 210-style plugs (A-Style)
  - Tru-Flate/Parker automotive style plugs (T-Style)
- Air Flow: 42 SCFM



**745 • 746**

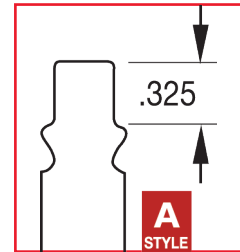


Boxed Part No.	Bulk Part No.	Retail Part No.	Per Card	NPT (in)	Connection	Product Specs		Features	
						Body	Sleeve		
745	745BK	s-745	1	1/4"	Female	Heavy Duty Brass	Heavy Duty Brass	Push-Type	Drag Guard
746	746BK	s-746	1		Male	Brass	Brass		

**A-STYLE ARO "210" INTERCHANGE**

- 1/4" basic flow size
- A-Style couplers are push type for quicker connection
- 2 locking rod connection
- A-Style couplers are steel, plated to resist rust
- A-Style plugs are case hardened steel, plated to resist rust

- Maximum inlet pressure: 300 PSI
- Maximum temperature: 250°F
- Air flow: 34 SCFM
- Seals: Buna-N



**775 • 776**

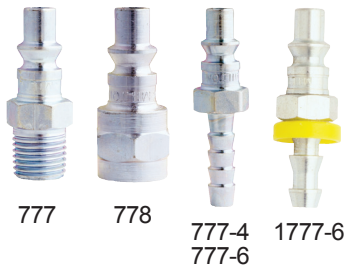


**A-Style Couplers**

Boxed Part No.	Bulk Part No.	Retail Part No.	Per Card	NPT (in)	Connection	Product Specs		
						Body	Sleeve	Feature
775	775BK	s-775	1	1/4"	Female	Case Hardened Plated Steel	Case Hardened Plated Steel	Push-Type
776	776BK	s-776	1		Male			
776-4					1/4" ID Hose Barb			
776-6					3/8" ID Hose Barb			

**A-STYLE SAFETY COUPLERS AVAILABLE ON PGS. 52 & 61**

**777 • 778 • 1777**



**A-Style Plugs**

Boxed Part No.	Bulk Part No.	Retail Part No.	Per Card	NPT (in)	Product Specs	
					Connection	Material
777	777BK	s-777	2	1/4"	Male	Case Hardened Plated Steel
778	778BK	s-778	2		Female	
777-4	777-4BK				1/4" ID Hose Barb	
777-6					3/8" ID Hose Barb	
1777-6					3/8" ID Push-on & Lock	

**s-772 • s-213 • s-775-4**



**A-Style 1/4" Coupler Kits**

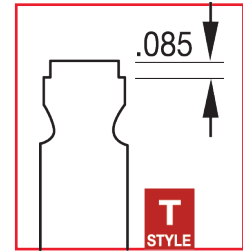
Kit Part No.	Kit includes (qty):		
	#775	#777	#778
s-213	1	3	1
s-772	1	1	
s-775-4	4		



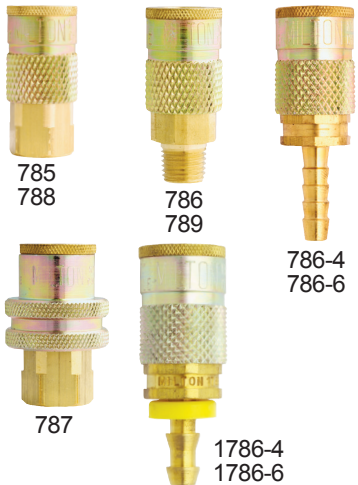
**WARNING: FOR USE WITH COMPRESSED SHOP AIR ONLY. NOT FOR BREATHABLE AIR USE**

**T-STYLE TRU-FLATE/PARKER INTERCHANGE**

- 1/4" basic flow size
- T-Style coupler bodies are solid brass
- 3 ball bearing connection
- T-Style plugs are case hardened steel, plated to resist rust
- Maximum inlet pressure: 300 PSI
- Maximum temperature: 250°F
- Air flow: 40 SCFM
- Seals: Buna-N



**785 • 786 • 787  
788 • 789 • 1786**



**T-Style Couplers**

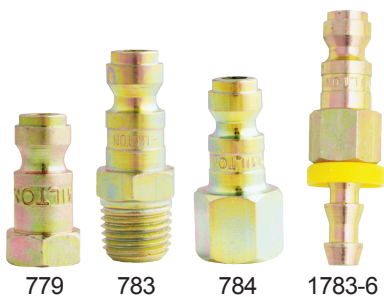
Boxed Part No.	Bulk Part No.	Retail Part No.	Per Card	NPT (in)	Product Specs		
					Connection	Body	Sleeve
785	785BK	s-785	1	1/4"	Female	Solid Brass	Plated Steel
786	786BK	s-786	1		Male		
787	787BK			3/8"	Female		Oversized Sleeve Ring
788					Male		
786-4				1/4" ID Hose Barb	Plated Steel		
786-6				3/8" ID Hose Barb			
1786-4				1/4" ID Push-on & Lock			
1786-6				3/8" ID Push-on & Lock			

Boxed Part No.	Description
768	Milton® Synthetic Replacement Washers*

\*(Fits all T-Style Couplers except ColorFit® Couplers)

**T-STYLE SAFETY COUPLERS  
AVAILABLE ON PGS. 52 & 61**

**779 • 783 • 784 • 1783-6**



**T-Style Plugs**

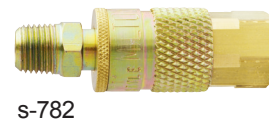
Boxed Part No.	Bulk Part No.	Retail Part No.	Per Card	NPT (in)	Product Specs Connection	Material
783	783BK	s-783	2	1/4"	Male	Case Hardened Plated Steel
784	784BK	s-784	2		Female	
779				.305-32 Size		
1783-6				3/8"	3/8" ID Push-on & Lock	

**s-215 • s-782**



**T-Style 1/4" Coupler Kits**

Kit Part No.	Kit includes (qty):		
	#785	#783	#784
s-215	1	3	1
s-782	1	1	

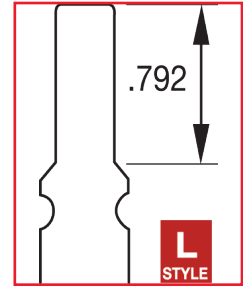


**WARNING: FOR USE WITH COMPRESSED SHOP AIR ONLY. NOT FOR BREATHABLE AIR USE**

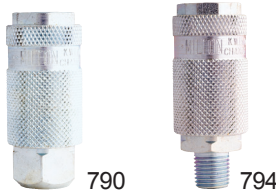
**L-STYLE LINCOLN INTERCHANGE**

- 1/4" basic flow size
- L-Style couplers are push type for quicker connection
- 3 ball bearing connection
- L-Style couplers are steel, plated to resist rust
- L-Style plugs are case hardened steel, plated to resist rust

- Maximum inlet pressure: 300 PSI
- Maximum temperature: 250°F
- Air flow: 32 SCFM
- Seals: Buna-N



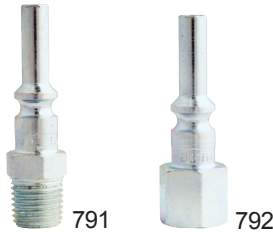
**790 • 794**



**L-Style Couplers**

Boxed Part No.	Bulk Part No.	Retail Part No.	Per Card	NPT (in)	Product Specs Connection	Body	Sleeve Release
790	790BK	s-790	1	1/4"	Female	Plated Steel	Push-Type
794		s-794	1		Male		

**791 • 792**



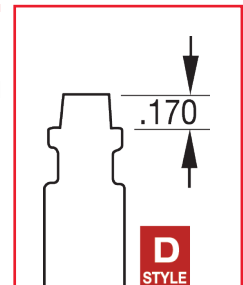
**L-Style Plugs**

Boxed Part No.	Bulk Part No.	Retail Part No.	Per Card	NPT (in)	Product Specs Connection	Material
791	791BK	s-791	2	1/4"	Male	Case Hardened Plated Steel
792	792BK	s-792	2		Female	

**D-STYLE DIAMOND-U INTERCHANGE**

- 1/4" basic flow size
- D-Style couplers are steel, plated to resist rust
- 3 ball bearing connection
- D-Style plugs are case hardened steel, plated to resist rust

- Maximum inlet pressure: 300 PSI
- Maximum temperature: 250°F
- Air flow: 34 SCFM
- Seals: Buna-N



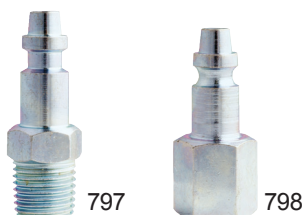
**795 • 796**



**D-Style Couplers**

Boxed Part No.	NPT (in)	Product Specs Connection	Body
795	1/4"	Female	Plated Steel
796		Male	

**797 • 798**



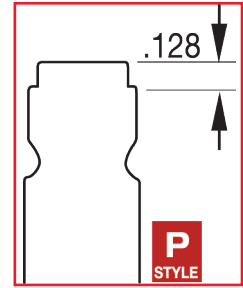
**D-Style Plugs**

Boxed Part No.	NPT (in)	Product Specs Connection	Material
797	1/4"	Male	Case Hardened Plated Steel
798		Female	

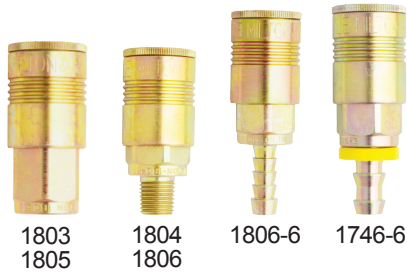
**WARNING:** FOR USE WITH COMPRESSED SHOP AIR ONLY. NOT FOR BREATHABLE AIR USE

**P-STYLE TRU-FLATE/PARKER INTERCHANGE**

- 3/8" basic flow size
- P-Style couplers are heavy duty steel
- 8 ball bearing connection
- P-Style plugs are case hardened steel, plated to resist rust
- Also known as "3/8 flow T-Style"
- Maximum inlet pressure: 300 PSI
- Maximum temperature: 250°F
- Air flow: 68 SCFM
- Seals: Buna-N



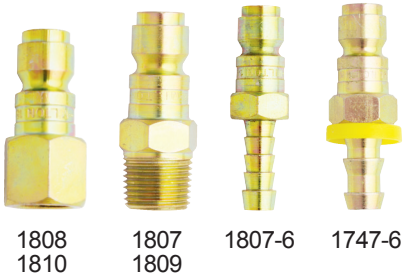
**1746 • 1803 • 1804  
1805 • 1806**



**P-Style Couplers**

Boxed Part No.	Bulk Part No.	Retail Part No.	Per Card	NPT (in)	Product Specs		
					Connection	Body	Sleeve
1803	1803BK	s-1803	1	1/4"	Female	Heavy Duty Plated Steel	Heavy Duty Steel
1804	1804BK	s-1804	1		Male		
1805	1805BK	s-1805	1	3/8"	Female		
1806	1806BK	s1806	1		Male		
1806-6	1806-6BK				3/8" ID Hose Barb		
1746-6	1746-6BK				Push-On & Lock 3/8" ID		

**1747-6 • 1807 • 1808  
1809 • 1810**



**P-Style Plugs**

Boxed Part No.	Bulk Part No.	Retail Part No.	Per Card	NPT (in)	Product Specs	
					Connection	Material
1809	1809BK	s-1809	2	1/4"	Male	Case Hardened Plated Steel
1810	1810BK	s-1810	2		Female	
1807	1807BK	s-1807	2	3/8"	Male	
1808	1808BK	s-1808	2		Female	
1807-6					3/8" ID Hose Barb	
1747-6	1747-6BK				Push-On & Lock 3/8" ID	

**SEE PAGE 47 FOR  
PUSH-ON & LOCK HOSE**

**s-1802**



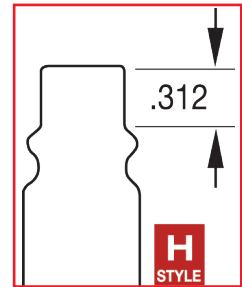
**P-Style 3/8" Coupler Kit**

Kit Part No.	Kit includes (qty):	
	#1803	#1809
s-1802	1	1

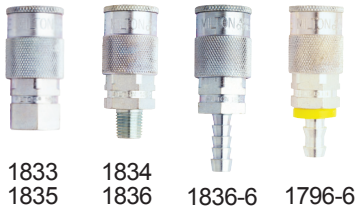
**WARNING: FOR USE WITH COMPRESSED SHOP AIR ONLY. NOT FOR BREATHABLE AIR USE**

**H-STYLE INDUSTRIAL INTERCHANGE**

- 3/8" basic flow size
- H-Style couplers are steel plated to resist rust
- 8 ball bearing connection
- H-Style plugs are case hardened steel, plated to resist rust
- Also known as "3/8" flow M-Style®
- Maximum inlet pressure: 300 PSI
- Maximum temperature: 250°F
- Air flow: 67 SCFM
- Seals: Buna-N



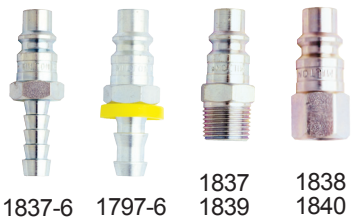
**1796 • 1833 • 1834  
1835 • 1836**



**H-Style Couplers**

Boxed Part No.	Bulk Part No.	Retail Part No.	Per Card	NPT (in)	Product Specs Connection	Body
1833	1833BK	s-1833	1	1/4"	Female	Plated Steel
1834	1834BK	s-1834	1		Male	
1835	1835BK	s-1835	1	3/8"	Female	
1836	1836BK	s-1836	1		Male	
1836-6					3/8" ID Hose Barb	
1796-6	1796-6BK				3/8" ID Push-on & Lock Hose Barb	

**1797 • 1837 • 1838  
1839 • 1840**



**H-Style Plugs**

Boxed Part No.	Bulk Part No.	Retail Part No.	Per Card	NPT (in)	Product Specs Connection	Material
1839	1839BK	s-1839	2	1/4"	Male	Case Hardened Plated Steel
1840	1840BK	s-1840	2		Female	
1837	1837BK	s-1837	2	3/8"	Male	
1838	1838BK	s-1838	2		Female	
1837-6	1837-6BK				3/8" ID Hose Barb	
1797-6					3/8" ID Push-on & Lock Hose Barb	

**SEE PAGE 47 FOR PUSH-ON & LOCK HOSE**

**s-223 • s-1835-4**

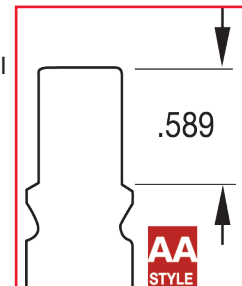


**H-Style 3/8" Coupler Kits**

Kit Part No.	Kit includes (qty):				
	#1835	#1836	#1837	#1838	#652-4
s-223	1	1	1	1	1
s-1835-4	4				

**AA-STYLE ARO "310" INTERCHANGE**

- 3/8" basic flow size
- AA-Style couplers are push type
- AA-Style coupler bodies are heavy duty steel
- AA-Style plugs are case hardened steel, plated to resist rust
- Maximum inlet pressure: 300 PSI
- Maximum temperature: 250°F
- Air flow: 59 SCFM
- Seals: Buna-N



**1875**



**AA-Style Couplers**

Boxed Part No.	Product Specs			
	NPT (in)	Connection	Body	Feature
1875	3/8"	Female	Heavy Duty Steel	Push Type

**1877 • 1878**



**AA-Style Plugs**

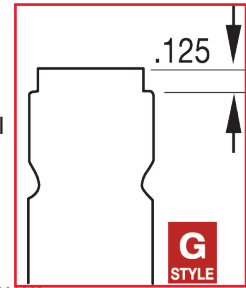
Boxed Part No.	NPT (in)	Product Specs	
		Connection	Body
1877	3/8"	Male	Case Hardened Plated Steel
1878		Female	

**WARNING: FOR USE WITH COMPRESSED SHOP AIR ONLY. NOT FOR BREATHABLE AIR USE**

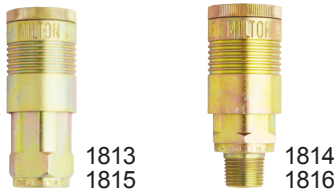
**G-STYLE TRU-FLATE/PARKER INTERCHANGE**

There are two distinct G-Style plug profiles. Although different, both styles fully connect with all G-Style couplers

- 1/2" basic flow size
- G-Style couplers are steel, plated to resist rust
- 8 ball bearing connection
- G-Style plugs are case hardened steel, plated to resist rust
- Also known as "1/2" flow T-Style"
- Maximum inlet pressure: 300 PSI
- Maximum temperature: 250°F
- Air flow: 99 SCFM
- Seals: Buna-N



**1813 • 1814 • 1815 • 1816**



**G-Style Couplers**

Boxed Part No.	Bulk Part No.	Retail Part No.	Per Card	NPT (in)	Product Specs Connection	Body
1813				3/8"	Female	Plated Steel
1814					Male	
1815	1815BK	s-1815	1	1/2"	Female	
1816	1816BK	s-1816	1		Male	

**1817 • 1818 • 1819 • 1820**

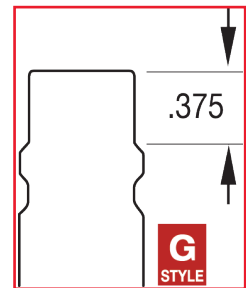


**G-Style Plugs**

Boxed Part No.	Bulk Part No.	Retail Part No.	Per Card	NPT (in)	Product Specs Connection	Material
1817	1817BK	s-1817	1	1/2"	Male	Zinc Chromate Coated Steel
1818	1818BK	s-1818	1		Female	
1819	1819BK			3/8"	Male	
1820					Female	

**G-STYLE INDUSTRIAL INTERCHANGE**

- 1/2" basic flow size
- G-Style couplers are steel plated to resist rust
- G-Style plugs are case hardened steel, plated to resist rust
- Also known as "1/2" flow M-Style®"
- Maximum inlet pressure: 300 PSI
- Maximum temperature: 250°F
- Air flow: 99 SCFM
- Seals: Buna-N



**1855 • 1857  
1858 • 1859 • 1860**



**G-Style Steel Plugs**

Boxed Part No.	Bulk Part No.	NPT (in)	Product Specs Connection	Material
1855	1855BK	1/4"	Male	Case Hardened Plated Steel
1859	1859BK	3/8"		
1860			1/2"	
1857	1857BK	Female		
1858	1858BK			

**s-224 • s-1815-2**



**G-Style 1/2" Coupler Kits**

Kit Part No.	Kit includes (qty):				
	#1815	#1816	#1857	#1858	#652-8
s-224	1	1	1	1	1
s-1815-2	2				



WARNING: FOR USE WITH COMPRESSED SHOP AIR ONLY. NOT FOR BREATHABLE AIR USE